

**THE  
BRITISH OPEN CHAMPIONSHIP**  
*www.thebritishopen.net*

***97<sup>th</sup> SPRING BRASS BAND FESTIVAL***

**The  
Grand Shield**

The Winter Gardens  
97 Church St, Blackpool  
FY1 1HL  
Blackpool

13<sup>th</sup> May 2017

**Guidance notes**

Tickets for the 97<sup>th</sup> Spring Festival will be available on the day.

Adults £12

Concessions £7

If you have any problems before the day please contact Frank Hodges, Telephone  
01942 212418 Mobile 07930 562 768 Email [frankhodes@thebritishopen.net](mailto:frankhodes@thebritishopen.net)

Karyn and Martin Mortimer welcome you to this year's Grand Shield and are pleased to provide you with the following information.

***“Please note that, this year the Players Entrance for the Grand Shield and Senior Cup will be in the Adelaide Street not Coronation Street”. (The Main Public Entrance will be in Church Street). Entrance for Senior Trophy Bands only will be in Coronation Street.***

The Contest will operate within British Open Rules in their most current form –Copy of Rules attached.

### **The Test Piece.**

**Reflections on Swan Lake -Stephen Roberts (With a cut from the end of bar 473 to the beginning of bar 501 of the original score)**

### **The Draws.**

These will take place in contest control (Location plan attached). The first half at 9.00 am and the second half at 12.30 pm. Contest will commence at 10.00am in the Opera House. We would request band drawn No.1 play the National Anthem. The Second Half will not start before 1.30pm.

### **Changing**

A dressing & preparation area in the Arena will be allocated after the draw when the first 5 bands will be permitted access via the Adelaide Street entrance. Please remember that any unattended items left in this area are your own responsibility.

Entrance to the changing area will not be permitted until the draw has taken place. Please make all members of your band aware of this. When your band is required at registration, the band will be informed by an official.

### **Wrist Bands.**

Wrist bands can be collected from contest control by one member of the band from 8.30am. Thirty wrist bands will be allocated to each band and must be worn at all times to gain access to all areas within The Winter Garden complex.

***Please note entrance to the Winter Gardens to collect wristbands is via the Church Street Main Entrance by one member of the band using the ticket sent by post with the hard copy of this information booklet.***

### **Players Entrance.**

All players and MD's must enter the back stage area by the Adelaide Street entrance. Please note that access to anyone other than players or MD's will not be permitted.

### **Coaches**

On arrival after the draw at the Winter Gardens, coaches should set down all passengers in Adelaide Street. Please remove from your transport all items required for your performance, after which the transport must be removed as quickly as possible to nearby parking facilities.

### **Public Entrance to the Winter Gardens.**

The public entrance to The Winter Gardens will be by the Church Street Entrance. Tickets and programmes will be available at the box office adjacent to the entrance.

### **Percussion**

Once again Mr. Ray Payne will provide the percussion and will be available throughout the contest for your assistance. A list of all percussion provided is attached.

### **Results**

When all sections are complete the award ceremony will take place in the Opera House.

If you have any problems before the day please contact Frank Hodges, Telephone 01942 212418 Mobile 07930 562 768 Email frankhodges@btinternet.com On Friday 12<sup>th</sup> and Saturday 13<sup>th</sup> May please call 07930562768.

## Test Piece

### Reflections on Swan Lake Stephen Roberts

(With a cut from the end of bar 473 to the beginning of bar 501 of the original score)

## The Grand Shield Percussion List 2017

The following items of percussion will be provided for your use. Other items required by the score must be provided by yourselves.

To assist with the quick and efficient change over of bands, Timpani should not be moved from the original fixed position to the conductor's right, as they face the band.

**\*Please note that the Marimba part in Reflections (bars 185 -205) is to be played on the Bergerault Xylophone one octave lower than written**

#### Timpani (Percussion 1)

32" 29" 26" 26" Majestic Symphonic Grand Copper Pedal Timpani and chair

Grover 6" Triangle on stand, 20" Avedis Zildjian Medium Crash Cymbal for use on the timpani (Bands to provide their own bow)

Treeworks Mark Tree on stand (windchimes)

Traps Tray

#### Percussion 2

DW Snare Drum on tall stand

Grover Tambourine, 4" Triangle & 9" Grover Triangle on stands

20" Zildjian K Constantinople Clash Cymbals and cradle

18" Zildjian K Constantinople Orchestral Suspended Cymbal

Hathaway Ebony Castanets and Percussion Plus Machine Castanets

LP Woodblock on stand (choice of Blue or Red)

Traps Tray

#### Percussion 3

36" Adams Orchestral Bass Drum on tilting stand with 18" Zildjian K Constantinople Clash Cymbal attached, 18" Zildjian K Constantinople Clash Cymbal and cradle

**\*Marimba part to be played one octave lower than written on Bergerault Record 4 octave Xylophone (Graduated Honduras Rosewood Note Bars)**

Yamaha YG1210 Glockenspiel on stand,

Percussion Plus Machine Castanets, Whip, Traps Tray

#### Percussion 4

Adams Artist Vibraphone

Adams 1 ½" Tubular Bells

Adams 4 octave Xylophone

36" Paiste Tam-Tam on stand

20" Avedis Zildjian Clash Cymbals and cradle

Grover 6" Triangle on stand, Percussion Plus Machine Castanets, Traps Tray

The above equipment is provided by Mr. Ray Payne, who will be available throughout the contest for your assistance.

# Grand Shield Split Draw 2017

F= First half Draw 9.00 am-  
S = Second half Draw 12.30 pm

| <b>BAND</b>            | <b>SPLIT</b> |
|------------------------|--------------|
| ALDBOURNE              | S            |
| ASHTON UNDER-LYNE      | S            |
| BURRY PORT TOWN        | S            |
| CAMBORNE TOWN          | F            |
| HAMMONDS SALTAIRE      | F            |
| HEPWORTH               | S            |
| KIRKINTILLOCH          | S            |
| LLWYDCOED              | F            |
| NASUWT RIVERSIDE       | S            |
| NORTHOP SILVER         | F            |
| PEMBERTON OLD WIGAN DW | S            |
| RAINFORD               | F            |
| REG VARDY              | S            |
| THORESBY COLLIERY      | F            |
| TONGWYNLAIS TEMPERANCE | F            |
| UNITE THE UNION        | S            |
| VIRTUOSI GUS           | F            |
| WHITBURN               | F            |
| WINGATES               | S            |
| WOODFALLS              | F            |

## BRITISH OPEN BRASS BAND CHAMPIONSHIPS RULES & CONDITIONS

1. In the following rules, the words 'Contest Management' shall relate to the Organising Committee of the British Open Brass Band Championship Limited. Any reference to the masculine shall include the feminine, and the interpretation of the following Rules shall be decided by the Contest Management, such decisions to be final.
2. These Rules will apply to all Contests run under the auspices of the British Open Brass Band Championships.
3. Entries to the British Open, Grand Shield Senior Cup and Senior Trophy Contests shall be limited to Brass Bands from the British Isles and Countries from the Commonwealth ie. Australia, New Zealand, and other countries as determined from time to time by the Contest Management.
4. Contests are open to Bands composed of standard Brass Band instruments, with a maximum of 25 brass players plus percussionists as required and a conductor. No player shall play more than one brass instrument during the performance of the test piece. The conductor may not play an instrument with the Band they are conducting.
5. All Trophies won at any contest are to be returned at the end of twelve months, with the exception of certain Trophies marked clearly in the Contest programme 'to be retained'.
6. The Contest Management reserves the right to change these Rules, the date or venue (with suitable notice given) and to limit the number of entries when necessary. Interested Bands will be notified of any changes.
7. The Contest Management cannot be held responsible for damage to, or loss of, any band / personal property nor for any personal injuries whilst attending any event. All venues used will carry insurance, to comply with statutory requirements.
8. The Contest Management shall issue invitations to any contest at least three months before the date of the relevant Contest, and acceptance forms must be returned to the Contest Management within three weeks, together with the required fee.  
Invitations will be issued on the following basis;
  - a) THE BRITISH OPEN  
The British Open list shall include all the Bands which competed at the previous year's competition less two 'demoted Bands'. These will be replaced by two 'promoted Bands' from the previous Grand Shield Qualifying Contest (Bands placed 1st 2nd).  
Demotion from The British Open is defined by adding together the aggregate placing for the last two years. The two Bands with highest aggregate will be demoted. If after the aggregate has been collated more than one band shares the 2nd demotion place the band which is placed lowest in the current year's contest will be deemed the one to be demoted.
  - b) THE GRAND SHIELD QUALIFYING CONTEST list shall include the two demoted Bands from the previous British Open Championship, plus the Bands which competed at the previous year's competition less four demoted Bands. These will be replaced by four promoted Bands from the previous year's Senior Cup Qualifying Contest (Bands placed 1st 2nd 3rd & 4th).  
Demotion from The Grand Shield is defined as the last four lowest placed bands in current year's contest.
  - c) THE SENIOR CUP QUALIFYING CONTEST list shall include the four demoted Bands from the previous year's Grand Shield Qualifying Contest plus the Bands which competed at the previous year's competition, less four demoted Bands. These will be replaced by four promoted Bands from the previous year's Senior Trophy Qualifying Contest (Bands placed 1st 2nd 3rd & 4th).  
Demotion from The Senior Cup is defined as the last four lowest placed bands in current year's contest.
  - d) THE SENIOR TROPHY QUALIFYING CONTEST list shall include the four demoted Bands from the previous Senior Cup Qualifying Contest plus the Bands which competed at the previous year's competition, less six demoted Bands. These will be replaced by six invited bands. Demotion from The Senior Trophy is defined as the last six lowest placed bands. The six relegated Bands will be excluded from invitation for a period of 12 months, unless they requalify by entering one of the qualifying competitions.

e) The Contest Management reserves the right to increase or decrease the numbers in each section as and when required. The Contest Management's decision is final

#### 9. Registration.

Your band is automatically registered when an invitation to the British Open series is accepted. We will provide your private online registry access details upon your acceptance of the invitation. The Open Registry guidance and tutorials, together with the Administrators contact details can be accessed from [www.thebritishopen.net](http://www.thebritishopen.net)" The Administrator will answer queries and offer assistance whenever required.

9a. All competing players must be registered with your band in the British Open Online Registry. Full name, date of birth and a recent photograph must be included in the register.

9b. Players having competed in the British Open with band (a) and subsequently competed with band (b) at the following Spring Festival will be prohibited from competing with band (a) at the following British Open

10. Each Band must name their Musical Director on the Entry Form for inclusion in the programme and if a substitution is required the Contest Management must be informed as soon as possible.

11. The 'Order of Play' for the Contest shall be by ballot to be held at least one hour before the published starting time. Each Band shall be invited to send a representative to attend the Draw who will act on its behalf in all matters arising during the Draw. If a Band is not represented at the Draw an official shall be empowered to Draw for them.

#### 11a. Split Draw (Spring Festival only)

Newly promoted and demoted bands adopt a place within the split draw previously occupied by the band that they replace in the relevant contest. The first and second half bands rotate annually.

Bands drawn 1 to 10 in that years draw will be allocated a draw in the second half of the following years Spring Festival for the contest for which the draw takes place.

Bands drawn 11 up to 20 will be allocated a draw in the first half of the following years Spring Festival for the contest for which the draw takes place.

Promoted and relegated bands will take the allocated draw for the bands that they replace in order of merit in the relevant contest.

Newly invited bands into the Senior Trophy will take the place of the 6 demoted bands placed 15,16,17,18,19,20 in the alphabetical order of the invited bands A = 15 etc.

For example, where 17, 18, 19 relegated and 1,2,3 promoted

Promoted 1 placed band replaces relegated 17 placed band

Promoted 2 placed band replaces relegated 18 placed band

Promoted 3 placed band replaces relegated 19 placed band

12. In the event of a Bandsman being unable to compete owing to family bereavement or illness or any other unforeseeable reason, a medical certificate or documentation as requested by the Contest Management must be produced covering these eventualities as soon as possible prior to the commencement of the contest. Providing that in the opinion of the Contest Management there is a bona – fide reason for the request, an application may be made for a deputy Bandsman (same instrument) from the band Drawn to play immediately before the Band whose player is unable to appear. The Band playing before shall agree to provide this player, the instrument and music. If the Band making application is drawn No. 1 then the relevant player from the Band Drawn to play last shall provide this substitute. A bandsman acting as deputy must not make any request for payment for their service and no such payment may be made by any official concerned.

13. The Band Drawn number one shall assemble for registration no less than 15 minutes before the scheduled time for the commencement of the Contest. The Band will be informed of any 'Registration Irregularities' and will be advised of any consequence i.e. possible objections or possibility of disqualification. The same registration procedure will apply to subsequent Bands.

14. Bands may request to escort the Adjudicators to the "Box" to check that the arrangements for their complete seclusion are adequate.

15. The Band Drawn number one will commence the day's proceedings by playing the first verse of the National Anthem. Each subsequent band will be required to commence its performance as soon as possible after the Adjudicators have indicated that they are ready.

16. The Adjudicators decision will be announced as soon as the Contest Officials have collated them.

The Adjudicator's decision is final.

17. Prize - money shall be despatched 14 days after the Contest. Any protest regarding the infringement of these Rules must be made in writing to the Contest Management within 7 days from the Contest date. A deposit of £10.00 must accompany the letter. This will be refunded if the objection is upheld. The Contest Management reserves the right to adjudicate on any protest. Prize Money involved will be withheld until protest adjudication is concluded.

18. The Contest Management shall be authorised to withhold any awards where any member, official or conductor of a contesting Band has been involved in conduct considered prejudicial to the reputation of the Contest or to be in breach of these rules. Any person concerned will be subject to disqualification and / or suspension from entry into Contests held under these Rules for a period of time to be decided by the Contest Management.

19. Any matters arising at a contest which are not covered by the above rules shall be dealt with by the Contest Management whose decision will be final.

These Rules & Conditions supersede any previously issued by the Contest Management and are effective from 1st November 2015.

The organisers of the British Open welcome any constructive suggestions which will always be considered.

Frank Hodges, 39 Broxton Avenue, Orrell, Wigan, WN5 8NP  
Telephone 01942 212418 Mobile 07930 562 768  
Email [info@thebritishopen.net](mailto:info@thebritishopen.net)

## **2016 Current British Open bands**

Playing members of current British Open Bands encounter constraints from playing in the current Spring Festival. If this occurs, the player/s concerned undergo exclusion from playing at the British Open (Rule 9a & 9b).

BLACK DYKE  
CARLTON MAIN FRICKLEY COLLIERY  
CORY  
FAIREY  
FODENS  
JAGUAR LAND ROVER  
MILNROW  
TREDEGAR

BRIGHOUSE & RASTRICK  
CO-OPERATIVE FUNERALCARE  
DESFORD COLLIERY  
FLOWERS  
GRIMETHORPE COLLIERY  
LEYLAND  
ROTHWELL TEMPERANCE  
VALAISIA BRASS BAND

# INTERNAL LAYOUT

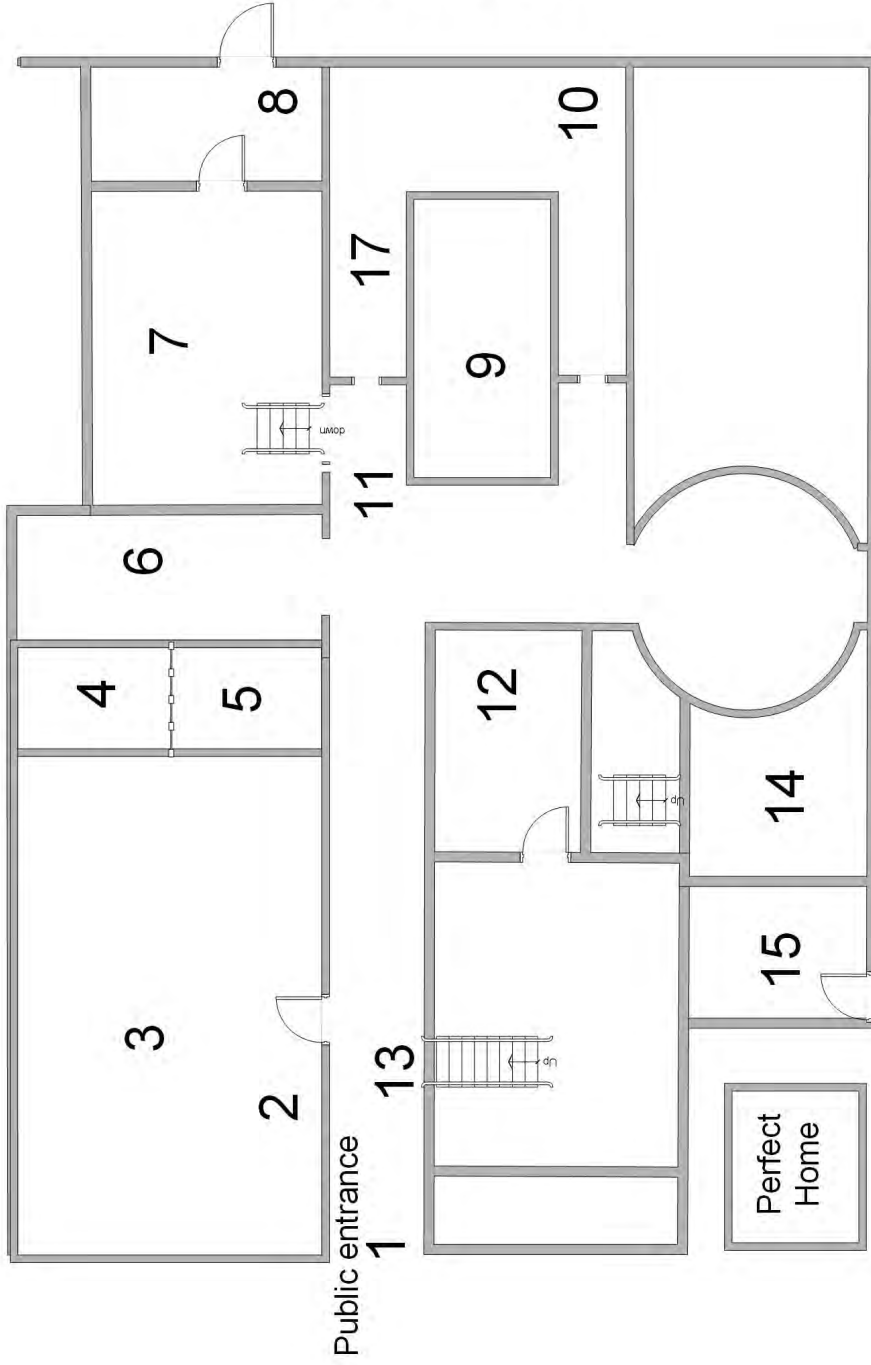
Church Street

Adelaide Street

Leopold Grove

Coronation Street

Victoria Street



Players entrance to dressing rooms

M&S loading bay

## KEY

1. Main Entrance
2. Public Entrance to Opera House.
3. Opera House.
4. Contest Control.
5. Draw.
6. Grand Shield Registration.
7. Arena Changing area for (Grand Shield and Senior Cup).
8. Players Entrance Adelaide Street (Grand Shield and Senior Cup)
9. Pavilion Theatre.
10. Senior Cup Registration.
11. Public Entrance to Pavilion Theatre.
12. Senior Trophy Registration.
13. Public Entrance to the Spanish Hall.
14. Spanish Hall.
15. Derham Lounge Changing area for the Senior Trophy.
16. Senior Trophy Players Entrance.
17. Trade Stands.